

# COFFEE BREWING SYSTEMS

## CBS-2230 NG Brewers

### 3.0-4.0 LITER BREWING SYSTEM

Shown with D041 3.0L Airpot & D451 4.0L / 1G LUXUS<sup>®</sup> Thermal Server



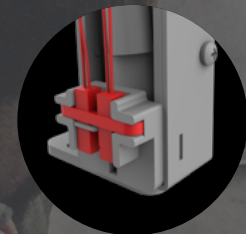
#### CAPACITIVE TOUCHSCREEN DISPLAY

The NG line features a capacitive LED touchscreen display. Set brew times, program recipe buttons and more with just the touch of a finger. It's as easy as a smartphone.



#### LED STATUS BAR

Quickly identify where your machine is at in the brewing process from anywhere in the room. The LED Status Bar changes color during the brewing process to let you know when it's ready to brew, brewing, almost done and ready to serve.



#### BREW BASKET LOCKS

Brew baskets lock in place during the brewing process for added safety and quality control.



**DISPENSERS**

**CBS-2230 NG Brewers**

**DISPENSERS**

**D041**

3.0 Liter  
Pump Lever  
Airpot



**D063**

3.8 Liter  
Pump Lever  
Airpot



FOR USE WITH  
2.5" OPTIONAL LEGS



**D451**

4.0 Liter / 1 Gallon  
LUXUS® Thermal  
Server  
L4S-10



**D482**

4.0 Liter / 1 Gallon  
LUXUS® Sight  
Gauge Server  
LGS-10



**SERVING STATION FOR THERMAL SERVERS**

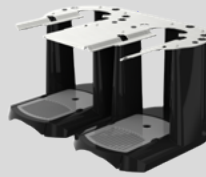
**A147**

Single Serving  
Station for  
L4S-10 & LGS-10  
S4S-10-1



**A148**

Twin Serving  
Station for  
L4S-10 & LGS-10  
S4S-10-2



**A149**

Triple Serving  
Station for  
L4S-10 & LGS-10  
S4S-10-3



All dispensers and serving stations **SOLD SEPARATELY**.



**BREW BASKET DESIGN**

Advanced brew basket design provides a deeper bed depth and superior thermal insulation for better extraction.



**CASCADING SPRAY DOME**

Patented design provides even saturation of the coffee bed for maximum extraction. Lime resistant design makes for less service calls.



**ECO MODE**

Reduces tank temperature during periods of non-operation to cut down on electricity usage.

# TECHNICAL SPECIFICATIONS

## NORTH AMERICA

### CBS-2231 NG Brewer

#### ELECTRICAL

Brewer SKU	Voltage	Heater Config.	Phase	Wires	kW	Connection	Max Amp Draw	[Gal] / [L] Hour	Certification
E2231US-1A115-PA011	120	1 x 1.5 kW	1	2+G	1.5	NEMA 5-15P	13.0	4.0 / 15.1	NSF c UL US
E2231US-1A123-PA012	120	1 x 2.3 kW	1	2+G	2.3	NEMA 5-20P	19.7	6.1 / 23.2	NSF c UL US
E2231US-1X117-PA011	120	1 x 1.7 kW	1	2+G	1.7	NEMA 5-15P	14.7	4.5 / 17.1	NSF c UL US
DUAL VOLTAGE	120/208-240	2 x 1.7 kW	1	3+G	3.4	Terminal Block	12.8-14.7	7.9 / 30.0	NSF c UL US

#### WATER

Water Inlet	Water Pressure [psig] / [Bar]	Minimum Flow Rate [gpm] / [L/min]	Tank Capacity [Gal] / [L]
3/8" Male Flare	20-75 / 1.37-5.17	1.50 / 5.68	3.00 / 11.36

#### CUPS PER HOUR

Cup size	8 [oz] / 236 [ml]	12 [oz] / 355 [ml]	16 [oz] / 473 [ml]	20 [oz] / 591 [ml]
No. Cups per hour <sup>2</sup>	127	85	63	51

### CBS-2232 NG Brewer

#### ELECTRICAL

Brewer SKU	Voltage	Heater Config.	Phase	Wires	kW	Connection	Max Amp Draw	[Gal] / [L] Hour	Certification
E2232US-1B223-MA110	208-240	2 x 2.3 kW	1	2+G	3.5-4.6	Terminal Block	17.1-19.7	12.2 / 46.3	NSF c UL US
E2232US-1B223-PA010	208-240	2 x 2.3 kW	1	2+G	3.5-4.6	Terminal Block	17.1-19.7	12.2 / 46.3	NSF c UL US
E2232US-1B230-MA110	208-240	2 x 3.0 kW	1	2+G	4.5-6.0	Terminal Block	22.2-25.5	15.8 / 60.0	NSF c UL US
E2232US-1B230-PA010	208-240	2 x 3.0 kW	1	2+G	4.5-6.0	Terminal Block	22.2-25.5	15.8 / 60.0	NSF c UL US
E2232US-1B230-PA110	208-240	2 x 3.0 kW	1	2+G	4.5-6.0	Terminal Block	22.2-25.5	15.8 / 60.0	NSF c UL US

#### WATER

Water Inlet	Water Pressure [psig] / [Bar]	Minimum Flow Rate [gpm] / [L/min]	Tank Capacity [Gal] / [L]
3/8" Male Flare	20-75 / 1.37-5.17	1.50 / 5.68	5.48 / 10.07

#### CUPS PER HOUR

Cup size	8 [oz] / 236 [ml]	12 [oz] / 355 [ml]	16 [oz] / 473 [ml]	20 [oz] / 591 [ml]
No. Cups per hour <sup>2</sup>	254	169	127	101

1 This version is made to order and it might require longer production lead time. Please ask your local sales representative for more information.

2 Based on standard factory settings: 5.5 minute brew time; 0% prewet; 93°C water. 3 liters per batch.

## ACCESSORIES

### CBS-2230 NG Brewers

#### BREW BASKETS AND PAPER FILTERS

Brewer SKU	Brew Basket	Coffee Capacity	Filter Size	Filter SKU	Filter/Case
All configurations	Standard Plastic / Stainless Steel	Up to 8oz / 227g	13" x 5"	F002	500/cs

#### B003218B1

13" x 5"  
Stainless Steel  
Brew Basket



#### B014218BN2BK

13" x 5"  
Plastic Brew  
Basket



#### F002

13" x 5"  
Paper Filters



# DIMENSIONS

## CBS-2231 NG Brewer

DIMENSIONS							WEIGHT		
	Height (A)	Width (B)	Depth (D)	Depth (E)	Faucet Clearance (F)	Brew Basket Clearance (G)		Empty [lbs] / [kg]	Filled [lbs] / [kg]
<b>Product Dimensions</b> with 1" Standard Legs	26.25" 66.67 cm	11.75" 29.84 cm	20.5" 52.07 cm	15.13" 38.43 cm	10.63" 26.98 cm	13.13" 33.35 cm	<b>Product Weight</b>	29 lbs 13.1 kg	55 lbs 24.9 kg
<b>Product Dimensions</b> with 2.5" Optional Legs	27.75" 70.48 cm	11.75" 29.84 cm	20.5" 52.07 cm	15.13" 38.43 cm	12.13" 30.80 cm	14.63" 37.16 cm	<b>Shipping Weight</b>	41 lbs 18.6 kg	N/A
<b>Shipping Dimensions</b>	30.0" 76.20 cm	17.0" 43.18 cm	22.0" 55.88 cm	N/A	N/A	N/A			

## CBS-2232 NG Brewer

DIMENSIONS							WEIGHT		
	Height (A)	Width (C)	Depth (D)	Depth (E)	Faucet Clearance (F)	Brew Basket Clearance (G)		Empty [lbs] / [kg]	Filled [lbs] / [kg]
<b>Product Dimensions</b> with 1" Standard Legs	26.25" 66.67 cm	19.75" 50.16 cm	20.5" 52.07 cm	15.13" 38.43 cm	10.63" 26.98 cm	13.13" 33.35 cm	<b>Product Weight</b>	47 lbs 21.3 kg	92 lbs 41.7 kg
<b>Product Dimensions</b> with 2.5" Optional Legs	27.75" 70.48 cm	19.75" 50.16 cm	20.5" 52.07 cm	15.13" 38.43 cm	12.13" 30.80 cm	14.63" 37.16 cm	<b>Shipping Weight</b>	55 lbs 24.9 kg	N/A
<b>Shipping Dimensions</b>	30.0" 76.20 cm	23.0" 58.42 cm	25.0" 63.50 cm	N/A	N/A	N/A			

Shown with 1" standard legs.

